



Manor School

Spring 2 Newsletter 2025/26

Headteacher's message

Dear Parents and Carers,

As we come to the end of what has been a fantastic Spring Term, I would like to thank you all for your continued support. Despite the bad weather, it has been a term full of energy, joy and meaningful learning experiences. Events such as World Book Day brought real excitement across the school, and it was wonderful to see so many pupils engaging so positively.

Whole school attendance sits slightly above 92%. Thank you for your commitment to this. As always, we are aiming for a minimum of 94%, as we know how important attendance is for pupils' progress. I would also like to gently remind families that the Department for Education is clear that leave during term time should only be authorised in truly exceptional circumstances.

Looking ahead, we are very excited about plans to open Manor School Kilburn in September 2026. This will grow into a provision for 81 pupils. We are currently in the early planning stages and will share more information during the summer term, so please do keep an eye out for further updates. There is now a dedicated page on our website which shares more information and can be found here: [Manor School - Kilburn](#)

We will also be sharing an updated Family Engagement Policy next term. As part of this, we are keen to strengthen our partnership with families and are exploring the creation of a Parents Council.



We would very much welcome your involvement and will share more details soon. Our thinking has been shaped by a small group of parents, I won't name individuals here, but I would like to thank them for their insights and support thus far.

On 19th March, we welcomed an external consultant as part of a Challenge Partners consultancy review. The feedback from this, alongside that from our school improvement partner, the Trust's Director of Schools and our own quality assurance processes, confirms that standards at Manor School remain high. We are proud of this and grateful for the contribution of our whole community.

Thank you once again for your ongoing support. I hope you all have a restful break, and we look forward to welcoming everyone back next term. To remind you, pupils return to school on Tuesday 14th April 2026.

Yours sincerely,

Steve Thompson - Headteacher



Neurodiversity / Pastoral

This year, at Manor School, our commitment to neurodiversity and neuroinclusion continues to be a central focus across our school community. In line with our 'Beyond the Gates' agenda, we are proud to be working closely with an ever-growing range of valued community partners whose ongoing collaboration supports our shared vision and amplifies our values. Our pupils have taken part in Dance, Drama, multi-sports, Basketball, Music sessions, Choir events and a range of creative arts experiences that continue to enrich the 'Manor Promise' offer.

Together, we are strengthening our neuroinclusion work beyond the school environment, ensuring that our families are well supported through a growing programme of coffee morning, well-being and

training sessions and finally with the better weather the start of our fabulous 'Sunshine garden stay-and-plays'. A special thank you to the whole team; FFA, Sangita (our Family Liaison Lead) and the site colleagues for all the fantastic work that goes on to facilitate these and if you missed the first one of the season last Saturday, we hope to see you at future dates over the summer term.

Our Neuroinclusion focus this year aligns with our wider school improvement priorities: the link between neuroinclusivity and pupil mental health and wellbeing. We recognise that for our neurodiverse community and by extension our families, prioritising wellbeing and mental health is essential to ensuring every child and family can thrive.

We have also benefited from excellent training delivered by our PSHE lead, equipping staff with practical strategies to support pupils. Importantly, this training has also encouraged us to reflect on how these same principles can be extended to support families and community partners.

Engagement with our community around neuroinclusion continues to grow, and we are excited to have begun working locally with the Brent Local Cultural Education Partnership (LCEP) Steering Group. This work further strengthens our commitment to inclusive practice and cultural enrichment, helping us to build meaningful opportunities for all.

Angela Boast - Deputy Head Teacher





Early Years

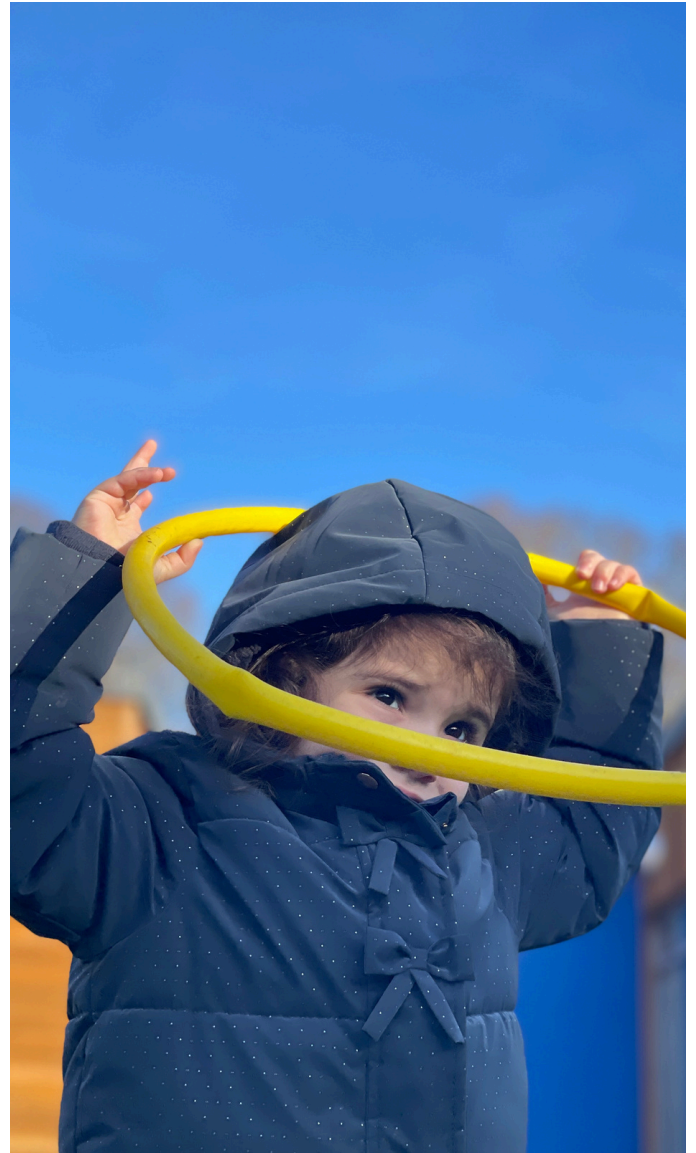
The expansion works at MSEYC are well underway and we hope to be ready for the new classrooms to be open when we return after the Easter break. In the meantime, we created a fourth classroom by converting our meeting room into Mango Class. A big thank you to all staff and parents who have been flexible in using the limited spaces available to work in and attend meetings.

The pupils showed an interest in watching the builders working outside and have especially enjoyed learning about the vehicles being used to make the playground.

We look forward to moving Peach and Mango Classes into the new classrooms when we return and welcoming eight more pupils who will be starting in Pear Class in April.

Wishing everyone a restful two-week break.

Mala Neves - Early Years Lead





Parent Liaison

Dear Parents and Carers,

Thank you for joining our Friends and Family Association Stay and Play event last week. It was wonderful to see so many families come together, sharing smiles, laughter, and special moments with the children. We really appreciate your support—please save the dates for our upcoming events. We look forward to seeing you again soon!

Save the dates:

- Saturday 25th April
- Saturday 9th May
- Saturday 6th June
- Saturday 4th July

Please see this list of useful links:

- <https://www.brent.gov.uk/localoffer>
- <https://www.barnardos.org.uk/what-we-do/services/brent-out-hours-support-line>
- <https://brentpcf.org/>
- <https://disabilitysportscoach.org.uk/get-active/community-clubs/club-brent/>
- www.sufra-nwLondon.org.uk
- www.sportattheheart.org

Sangita Varsani - Family Support Practitioner





Spiritual, Moral, Social and Cultural development

This term SMSC has again been high on the agenda across much of the learning at Manor School.

The junior leaders began the year designing posters about how the public when out walking with their dogs, can help them feel safe in the park by keeping their dogs on leashes etc.

At the beginning of March, 7 junior leaders and prospective junior leaders attended the Commonwealth Day Service at Westminster Abbey in the presence of the King and Queen and the Prince and Princess of Wales and the Prime Minister.

The theme for this year is “Unlocking Opportunities together for a prosperous Commonwealth”. This emphasises the importance of investing in people and especially our young. It highlights Article 6 and Article 29 of the UNCRC, that we have a right to be supported to live and grow and a right to an education that develops our personality. As a follow-up to this, some children will be entering the Queen’s Commonwealth Writing Competition. Watch this space.

The School has been celebrating Ramadan, Lent, Eid and Easter this term. The children had opportunities to make links and recognise the similarities in their celebrations. This highlighted Article 14 of the UNCRC that we all have a right to celebrate and thoughts and beliefs.

We finished the term by again raising awareness of ourselves as global citizens and had fun on the 20th of March for Red Nose Day, raising £152 to go to Comic Relief. Again the rights of the child underpin everything we do and the right to be supported to grow and thrive was emphasised through our activities.

Wishing you all a safe and happy Easter break.

Catherine Harris - SMSC Lead



Literacy

This term in Literacy we have had two national and international events that promote reading, stories and all things Literacy!

Back in February it was National Storytelling Week. Across the school classes had the opportunity to use a simple template to make their own story, being able to choose a character, setting, special item, problem and the resolution.

Feedback from teachers showed great engagement in the task, and a great deal of enjoyment from the pupils.

More recently, we celebrated World Book Day. This event is a big one in the literacy calendar, and we had three different activities running across the whole week. We ran a whole school project based on the story 'Not a Box' by Antoinette Portis. This is a sweet little story about a rabbit who has a cardboard box, except it's Not a Box, it's a racing car, a rocket ship, a mountain and much more. Each class was given a copy of the book and a box, and were asked to turn the box into 'Not a Box', and do a piece of written work that ranged from labelling their creation to writing instructions on how to make or use their 'Not a Box'.

Also as part of World Book Day activities we had the amazing Embracing Arts theatre company come in and perform an interactive sensory story to classes; and of course we had a dressing up day to finish the week in fabulous costumes and colours.

Alex Oldham - Literacy Lead



Maths and STEM

What is curiosity?

This was the theme of this year's Science Week, titled "Curiosity: What's your question?" Throughout the week, we explored, investigated and discovered new things through exciting, hands-on science activities.

Classes took part in a carousel of different experiments, visiting other classrooms and enjoying activities led by teachers from across the school. Each room offered something new to explore. There was plenty of mess, a few exciting explosions, and lots of surprising results, all part of developing and celebrating our curiosity.

We also love our planet and are always looking for ways to care for it. Our new Eco Maths activities are a great way for pupils to develop their mathematical understanding while connecting their learning to the environment.

Some of the activities we'll be enjoying next term include counting how many lights are switched on in each room and comparing totals, as well as investigating where we can find the most minibeasts on a woodland walk.

You might like to try some Eco Maths activities at home this Easter holiday:

Make a Nature Pattern

Collect leaves, petals or small stones and create repeating patterns together.

Garden Measuring

Use footsteps, sticks or hand spans to measure things outside. For example, how many footsteps long is the garden path? How many sticks tall is a plant pot?

Easter Egg Size Hunt

Hide a few chocolates, toys or paper eggs in the garden or around your home. Ask your child to find them and compare the sizes. Which egg is bigger? Which is smaller? Can they put them in order from smallest to biggest?



Samira Choaihi - Maths and STEM Lead



Engagement

This term the Engagement team have been looking at ways to promote the five engagement lenses in everyday learning: Initiation, Persistence, Exploration, Anticipation, Realisation.

Our EYFS staff have been promoting these lenses during free flow activities with our youngest pupils. The pupils have been learning how to: initiate independently during play, persist and problem solve, explore activities in different ways, anticipate or show excitement that something is about to happen, and demonstrate realisation regarding how to use a toy or activity.



At our Chamberlayne Road site, our pupils have been learning to engage with their class learning theme. They have been exploring our new theme resources boxes, and this has been helping deepen their understanding of the theme, while also building their engagement skills.

Developing our pupils' engagement is one of the most important building blocks in our foundations for all learning!

Ailish Casey - Engagement Lead

PSHE

This has been a really exciting term for PSHE. Alongside Thrive, our whole-school approach to supporting pupil mental health, we have introduced the One Goal programme to further nurture our pupils' emotional wellbeing by fostering a strong sense of connection and belonging in everyday school life.

Through One Goal, we are beginning to train groups of pupils as Mental Health Champions. In this role, they will help promote the importance of looking after our mental health, develop strategies to support their own wellbeing, and encourage their peers to do the same.

This term, pupils have been learning about what mental health is and how to recognise when they - or others - might be finding things difficult. In the new term, we look forward to building on this learning by exploring practical ways to support and maintain positive wellbeing.

Eva Bourmpaki - PSHE Lead

Therapy Team

We are happy to share with you some updates from the Therapy team.

During this Spring term, we were happy to welcome our new therapists, Lilia (Occupational Therapist) and Sharifa (Speech and Language Therapist) to the Therapy team. We say goodbye for now to our SaLT Ayah, who is on maternity leave and we wish her all the best.

Our Therapy team also delivered training to SENCOs of different schools within Brent as part of our Outreach Offer. This included an 'Afternoon with' session with our Lead SaLT Lorenzo and Lead OT Brooke around maximising communication in the classroom and supporting participation and regulation of pupils. Our Makaton tutor, Rebecca, also provided Makaton taster sessions as part of this.

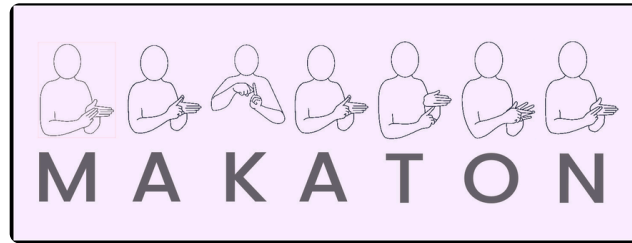
We were also privileged to engage in our continuing professional development (CPD) through a range of activities and seminars. The OT team attended the yearly 'Learn Play Thrive' Neurodiversity summit which consisted of 8 talks presented by a panel of neurodivergent professionals and centred around supporting social and emotional wellbeing for autistic individuals and promoting neurodiversity-affirming, person-centred care). Meanwhile,

the SaLT team attended the first of three Autism Clinical Excellence Network (CEN) sessions held by the Royal College of Speech and Language Therapists (RSCLT). The SaLT team learned and explored the idea of attuned goal setting and exploring methods of teaching topics related to personal, social, health, and economic education (PSHE) to our neurodivergent populations. We look forward to continuing to put our learning into practice to best support the pupils in all Trust schools.

We all wish you a lovely time during our Spring break!



The Partnership Trust Therapy Team



As we near the end of spring term I would like to take a moment to continue building on Makaton's positive momentum across The Rise Partnership Trust. This is an opportunity to celebrate, reflect on the progress made, and share our plans going forward.

It has been a truly inspiring start to 2026, with pupils and staff, especially our dedicated Makaton Champions leading, embracing, and sharing ways to communicate and connect.

Makaton Friendly

As part of maintaining standards of our Makaton Friendly Status at **Manor School** and **The Avenue School** one of the highlights this term has been the launch of our exciting **Makaton QR project**. This project has brought communication to life, giving staff and families easy access to core vocabulary concept videos that will support the learning and use of Makaton signs visually so they can be put into practice. It has been wonderful to see how positively this has been received across our school community.

Pupil Support and Engagement

We continue to see the positive impact of the daily use of Makaton. This term our SaLT team focused on sharing a functional Phrase of the Week: some examples of these phrases included, 'Can I have?', 'Let's play', 'I am hungry', 'Can you help me?'.

It has been lovely to hear from our parents and class teachers that our pupils have boosted enthusiasm and skill development by using signing more at home, this brings huge smiles to our faces!

Looking Ahead to Summer Term, we will continue building on this by:

- Providing **more staff and parent training** to support consistent use of signs and phrases.
- Providing support and working with our Safeguarding leads to develop a 'Safeguarding through Makaton' programme.
- Continuing to support our new **Wembley Manor** site towards becoming a Makaton Friendly school.

We remain committed to strengthening communication for all our pupils and ensuring that every child has the tools they need to express themselves effectively.

Thank you, as always, for your ongoing support.





Diary Dates

Easter Holidays countdown calendar

On Friday 27th March school is finished. No school on: Saturday Sunday

Monday Tuesday Wednesday Thursday Friday Saturday Sunday

Monday Tuesday Wednesday Thursday Friday Saturday Sunday

Monday Back to school on Tuesday 14th April.

[Click here for a printable PDF!](#)



Spring recap 2026

Manor School

Spring 2026
End of term recap

www.manor.brent.sch.uk