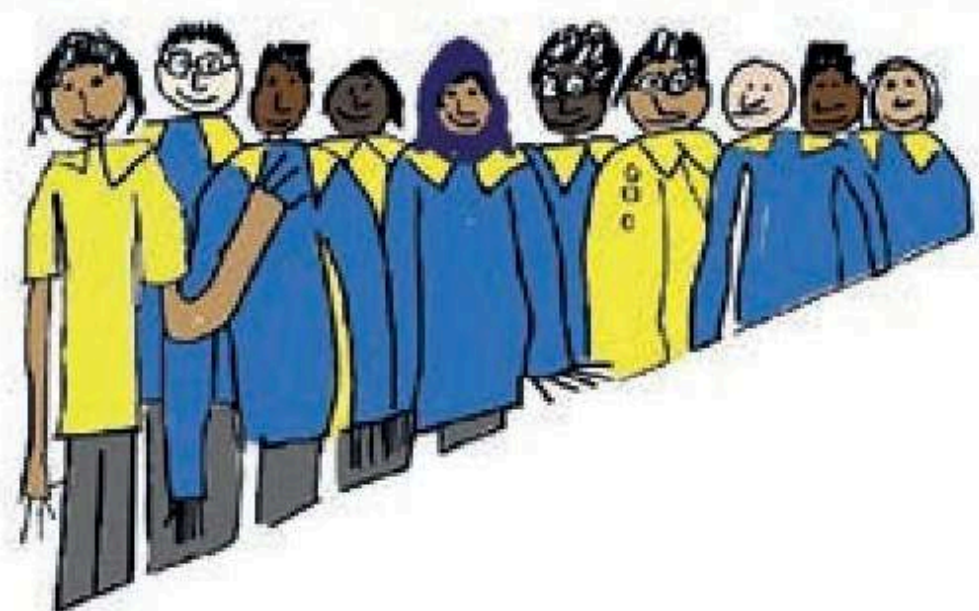


# Manor School



Personal Development offer





Our young school council leaders in community partnership with local food banks, delivering over 200kg of donations from our very generous Manor school families. Preparing our students to be charitable citizens beyond life at our school.





## At Manor School:

We have created a Personal Development offer to give every child the opportunities and experiences to support their individual growth to 'RISE'; become resilient, independent, skilled and expressive.

We work in collaboration with parents, carers, professionals and community partners to ensure that each child is supported to make the most of their unique potential; and prepared for adulthood and life beyond Manor School

Our Personal Development offer is built around our core PSHE curriculum and underpinned by our Thrive approach. We capture part of our offer through the effective use of floor books and the opportunities and experiences offered through the Manor Promise.

We ensure that each pupil is enriched by their time at school; we equip them with the skills and knowledge to keep themselves safe, healthy and happy.

### PSHE (and RSE)

#### At the heart of our Personal Development offer is Our PSHE curriculum

PSHE plays an integral part in our school life. It is across the curriculum both in discreetly taught PSHE lessons and throughout aspects of the school day. There are three main aspects to PSHE delivery: Relationships, Health & Wellbeing, and Living in the Wider World. We set realistic but challenging targets for our pupils and support and guide them, in developing PSHE skills. The Experiences we offer our pupils help them to build their understanding of who they are and what they can achieve, and so begin a journey of personal development.

RSE is taught across the curriculum through the curriculum themes and daily activities. It is differentiated and personalised according to individual maturation, levels of understanding and communication skills as well as social and emotional need. Our RSE curriculum aims to equip pupils with information, skills and positive values to have safe, fulfilling relationships. RSE for pupils with SEND is part of life-long learning, it begins at Reception and continues throughout formal education and beyond. We start with core concepts such as public and private, using correct terms for the private parts of the body, and an understanding of rights, relating to our bodies, rules relating to touch, positive friendships, respect and consent. As they grow older pupils are taught to recognise and understand changes in their bodies relating to puberty.



## CURRICULUM THEMES

The themes for learning across year groups have been chosen to ensure a rich tapestry of experiences so that not only can our children develop their knowledge and understanding but also their interests. In doing so become resilient, skilled, expressive and ultimately as independent as possible.

Famous People						
Relationships						
Helping Others	Habitats	Fantasy Worlds				
Houses and Homes	Growing	Extreme Weather	Changes			
Friends and Family	Mini Beasts	Space	Materials	Healthy Living	Adventure	
People who help us	Pets	Under the Sea	Seasons	Sports	Travel	Moving On
Myself	Plants	Light and Dark	Water	Healthy Eating	Holidays	Money
My School	Animals	Toys and Games	Clothes	Food and Drink	Transport	Shops
<b>Relationships and People</b>	<b>Recognising and caring for living things</b>	<b>Awe and Wonder</b>	<b>Understanding the world for independent living</b>	<b>Being Healthy</b>	<b>Getting out and about in the community</b>	<b>Employment</b>

PSHE strands within curriculum themes



Preparation for adulthood and life beyond Manor School

Building Cultural Capital and links to community

The Manor Promise

Impactful pupil voice and advocacy

Life skills including functional skills

Careers and Employability

Metacognition and self-regulation

SMSC

Embedded therapeutic approaches

A curriculum that supports our pupils to RISE

Our PSHE Curriculum is the core of our Personal Development offer

\*Refer to rationale documents for further information



## Our personal development offer aims to:

Be built around our PSHE curriculum

Equip pupils with the skills and knowledge required to keep them safe and healthy

Allow pupils' opportunities to experience enriching activities and develop their own areas of interest and meaningful hobbies.

Allow pupils to develop skills they need to actively contribute to their community, and safely access a range of environments/ settings

Actively promote pupils' Spiritual, Moral, Social and Cultural (SMSC) development and promote British Values.

Explore and develop pupils' skills and interests across a diverse subject base

Ensure each pupil is enriched by their time at school and challenged to fulfil their unique potential

Support pupils to develop resilience, confidence and strong self-advocacy skills

Support pupils to become as independent as possible







**Resilient**



**Independent**



**RISE**



**Skilled**



**Expressive**